

# FRAM POST

# Spring

2018

## Welcome back!

Its 2019 and the days are starting to get longer, and again we have busy programs from each of our 10 sections.

## Behind the scenes

Durham Scout County and Durham City Scout District have published their aims for the next five years and so it's now our turn to plan for our future and develop a plan to help direct us for the next five years.

## Hut development

It's taken a long time but we have finally received a couple of quotes for the first phase of the building development works and work has now commenced to obtain the necessary external funding required before the work can start. If anyone has experience in securing funding please do get in touch. There will also be some unskilled preparation work required shortly before the building work starts - please keep your eyes open for details.

## Lost property

Please check the yellow duck regularly for lost property. At the end of each term the Duck is emptied - please ask a leader ASAP if you missed your chance.

## Could you help?

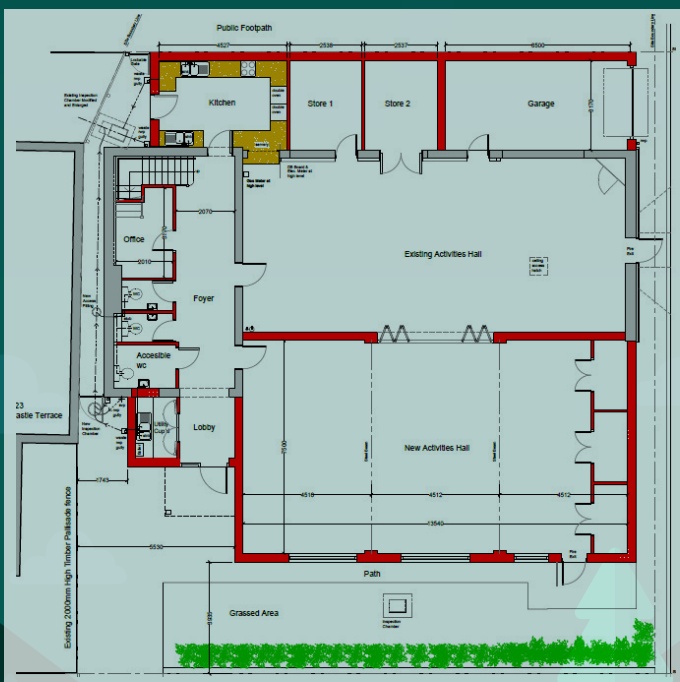
Fram Scouts is entirely run by volunteers, that's everyone including the general manager (Group Scout Leader), the book-keeper, the cleaner and all the leaders who turn out every week (quite often more than once). The skills and time commitment the different volunteers offer varies greatly between roles - so there really is an opportunity for almost anyone to assist, furthermore, the Scout association provide training where it's required.

## Group Secretary

There is a new vacancy for the Group Secretary. As a minimum the role requires minuting about 5 meetings a year, but could also include other administrative duties. Please contact [John@framscouts.org.uk](mailto:John@framscouts.org.uk) if you might be able to assist.

## Scout DBS Checks

Every adult helping with Scouting regularly or staying overnight must have a Scout DBS check. There is no cost to either the Group or the adult for completing a Scout DBS check, and all you need is three quality pieces of ID. Please speak to your section leader for more information. When completing a Scout DBS it's very important you follow up and supply the additional details. You will be emailed with the necessary login information. If you don't do this the DBS is cancelled.



The Explorer Section runs from 7.30 until 9.30pm unless Explorers/parents are informed otherwise.

| Date     | Day    | Activity  |
|----------|--------|-----------|
| 28 April | Sunday | St George |